



Lincolnshire
Integrated Care Board

NHS Lincolnshire Integrated Care Board **Annual Safeguarding Report**

Author

Nicola Wilkinson, Designated Nurse for Safeguarding Adults, Children and Looked After Children.

1st April 2023 – 31st March 2024.

Table of Contents

Foreword	2
Executive Summary.....	3
Our Vision.....	3
Key Areas of work 2023 – 2024	4
Safeguarding Team Charter	5
Overview of NHS Lincolnshire ICB Compliance	6
- Position on Amber ratings	7
ICB Safeguarding Governance Structure	8
Governance Structure of the Safeguarding Boards	9
Examples of Strengthened Safeguarding Practice	10
Safeguarding Training	11
- Impact of Safeguarding Training	12
Safeguarding Partnerships – Work Undertaken 2023 - 2024	13 - 18
Review of Priorities Set 2023 - 2024	19 - 21
Future Priorities and Objectives	22
Glossary	23
Conclusion	24

Foreword.



As the Chief Nursing Officer for NHS Lincolnshire Integrated Care Board, and the Executive Lead for safeguarding, I am honoured to share our ICB Safeguarding Annual Report for the year 2023-24.

A clear focus for us this year was to support the re-shaping of our relationships with all our safeguarding partners, including our health and care colleagues, now that we are working as part of an Integrated Care System. For safeguarding, this has required a shift in our approach to working more collaboratively with health and care and our wider partner agencies to forge a collective voice to support strategy development and delivery.

The team has delivered some excellent work during this time, establishing the changes made to the ICB safeguarding team structure and working in partnership with partner agencies to implement recommendations from statutory safeguarding reviews. The complexity of system working is challenging and the daily operational pressures have been significant, however, it has not hindered our appetite for change and innovation, and despite these pressures the teams have managed to work proactively to support local, regional, and national safeguarding priorities and respond to the ever-evolving safeguarding landscape.

The journey will continue into next year, where it is foreseen that we will undertake a systemwide transformation programme which aims to improve the population outcomes for the community in which we serve and ensure that safeguarding is front and centre in those discussions and decisions.

I hope you find this report informative.

Martin Fahy
Chief Nurse
NHS Lincolnshire Integrated Care Board

Executive Summary.

This annual report covers the period between 1st April 2023 and 31st March 2024 and details how the NHS Lincolnshire Integrated Care Board (ICB) safeguarding team has worked to best deliver the statutory safeguarding duties.

The team has continued to work proactively to support local, regional, and national safeguarding priorities and respond to the ever-evolving safeguarding landscape, and has worked closely with partners, both within health and across wider agencies.

Safeguarding is a collective responsibility, whilst individuals and organisations have distinct roles, the system cannot operate effectively unless individuals and organisations work together. Oversight of local partnership safeguarding arrangements is provided by the Lincolnshire Safeguarding Adults Board (LSAB), the Safer Lincolnshire Partnership (SLP), the Lincolnshire Domestic Abuse Partnership (LDAP), and the Lincolnshire Safeguarding Children Partnership (LSCP). NHS Lincolnshire ICB is represented at all levels of work within these, providing leadership for safeguarding through attendance to the strategic boards, and sharing specialist knowledge and expertise through the active participation of the ICB safeguarding team in sub-groups, audit processes, statutory reviews (Child Safeguarding Practice Reviews, Serious Adult Reviews and Domestic Homicide Reviews), and specific task and finish groups.

The ICB safeguarding team have attended regional and national NHSE meetings and forums, disseminating learning and considering the implications of findings for the Lincolnshire system.

The team has continued to deliver support and expert safeguarding advice to our colleagues in primary care through the delivery of safeguarding training, the facilitation of GP forums, a bi-monthly safeguarding newsletter, and providing support in conducting chronologies and reports for safeguarding statutory reviews.

Our Vision.

Our vision is for the population of Lincolnshire to have access to health services that safeguard, promote, and protect individual human rights, independence, and wellbeing. Working in partnership the ICB will seek to secure assurance that individuals at risk are safeguarded against abuse, neglect, discrimination, poor treatment and are treated with dignity and respect.

Key Areas of Work for 2023-2024.

- Embedding learning from Statutory Safeguarding Reviews - Rapid Reviews, CSPRs, SARs, DHRs
- GP safeguarding training
- Complex safeguarding Case Advice – Adults and Children
- Focus on Refreshing the Implementation of ICON and raising awareness utilizing a radio campaign
- Strong Partnership Working across the Integrated Care System
- Supporting the Child Sexual Abuse Pathway
- Developed a Safeguarding Human Resource Link
- Roll-out of Prepaid Prescription Scheme for Care Leavers
- Mental Capacity Act Progressing Community Deprivations to the Court of Protection
- GP pilot for Domestic Violence low risk referral process
- Supporting the Families First for Children Pathfinder
- Business Case to Improve Health input into Children Front Door Strategy Discussions
- Supporting safeguarding multi-agency decision-making processes – MARACs, Strategy discussions, Channel
- Management and oversight of CDOP
- Increase number of Care Home and Home Care Safeguarding Ambassadors with the support of system partners
- Transitional safeguarding
- Phase 2 CP-IS
- Domestic Abuse training for managers to support staff that are employee

Safeguarding Team Charter.

The team has reflected on its core safeguarding values for 2023-2024 with the implementation of the safeguarding team charter. Our vision is for the population of Lincolnshire to have access to health services that safeguard, promote and protect individual human rights, independence, and wellbeing. Working in partnership the ICB will seek to secure assurance that individuals at risk are safeguarded against abuse, neglect, discrimination, poor treatment and are treated with dignity and respect.

Excellence	Values	Relevant	Accessible and Inclusive	Leading
<p>We aim to achieve excellence in all that we do, always being principled, considerate, and respectful.</p> <p>We will demonstrate excellence by:</p> <ul style="list-style-type: none"> • Taking pride in our work. • Taking accountability. • Being prepared to give, and to receive, constructive and timely feedback with the intention of improving performance or behaviour. • Taking the time to identify and celebrate success. • Striving to continuously improve our work, individually and as a team, always aiming to deliver what is expected of us in the best way that we can. • Proactively managing our workload and making effective use of our time. 	<p>We have strong values that determine our priorities and guide our decision making: integrity, accountability, diligence, perseverance, and discipline.</p> <p>We will demonstrate our values by:</p> <ul style="list-style-type: none"> • Doing what we say we will and being clear in our expectations. • Leading by example, role modelling appropriate, professional behaviours. • Asking for help when we need it. • Complying with policies and procedures. • Seeking to understand issues that arise and working constructively to resolve them. • Giving due credit for the work of others. • Respecting each other/or our colleagues. 	<p>Our safeguarding processes are relevant to those at risk of abuse, neglect, omissions in care and harm.</p> <p>We will be relevant by:</p> <ul style="list-style-type: none"> • Having open and accessible communication channels and messages. • Proactively looking for new and better ways of working. • Having a culture of frequent constructive feedback which is listened to and acted on. • Changing our communication style to best meet the needs of our audience. • Suggesting and trying out new approaches and taking acceptable risks. • Working collaboratively with partner agencies to safeguard individuals. 	<p>We foster a welcoming community and are proud to be part of the ICB. Our safeguarding processes are relevant, and we are diverse, inclusive, and accessible to all.</p> <p>We will be accessible and inclusive by:</p> <ul style="list-style-type: none"> • Promoting a culture where diversity of thought is encouraged by actively supporting new ideas, approaches and ways of working and support staff that ask for help. • Valuing and exchanging different knowledge and skills • Challenging bullying, harassment, or discriminatory behaviour • Welcoming and supportive to our colleagues and stakeholders. 	<p>We are strong leaders. Bold, ambitious, and acting with integrity, always willing to listen.</p> <p>We will demonstrate leadership by:</p> <ul style="list-style-type: none"> • Inspiring others to take accountability for achieving high performance and leading by example. • Welcoming feedback to support our development. • Actively aligning our work to the safeguarding strategy. • Always looking for opportunities to work collaboratively with others to achieve more together. • Being an ambassador for change and the opportunities that it provides.

Overview of NHS Lincolnshire ICB Compliance.

As per the Safeguarding Children, Young People and Adults at Risk in the NHS: Safeguarding Accountability and Assurance Framework (revised 2022), ICBs are responsible in law for the safeguarding element of the services they commission.

The table below illustrates our compliance against what is expected in the Framework.

AREA	STANDARD	RAG RATING
Leadership and Organisational Accountability	A clear line of accountability for safeguarding, reflected in the ICB governance arrangements, i.e., a named Executive Lead to take overall leadership responsibility for the organisation's safeguarding arrangements. In addition, a team made up of designated professionals for safeguarding children, looked after children, care leavers and adults.	
Training	Training all ICB staff to recognise and report safeguarding issues supported by a training strategy and compliance percentage in line with Intercollegiate Documents and national guidance for Prevent.	
Safer Recruitment	Clear policies describing the commitment and approach to safeguarding, including safe recruitment practices and arrangements for dealing with allegations against people who work with children and adults, as appropriate.	
Inter-agency Working	Effective inter-agency working with local authorities, the Police and third sector organisation's, including appropriate arrangements to co-operate with local authorities in the operation of safeguarding children's partnerships, Corporate Parenting Boards, Safeguarding Adults Boards and Health and Wellbeing Boards.	
Implementation	Appropriately engaged with all safeguarding investigations, multi-agency case reviews or safeguarding practice reviews and that the evidence of learning has been embedded into practice.	
Patient Engagement	Ensures appropriate and accessible information is provided for its population in relation to how it discharges its duties for safeguarding.	
Supervision	Safeguarding supervision is available to staff in line with Intercollegiate Guidance.	
Assurance	As a commissioner of local health services, the ICB must be assured that there are effective safeguarding arrangements in place in the services and gain assurance throughout the year to ensure continuous improvement.	

Position on amber ratings:

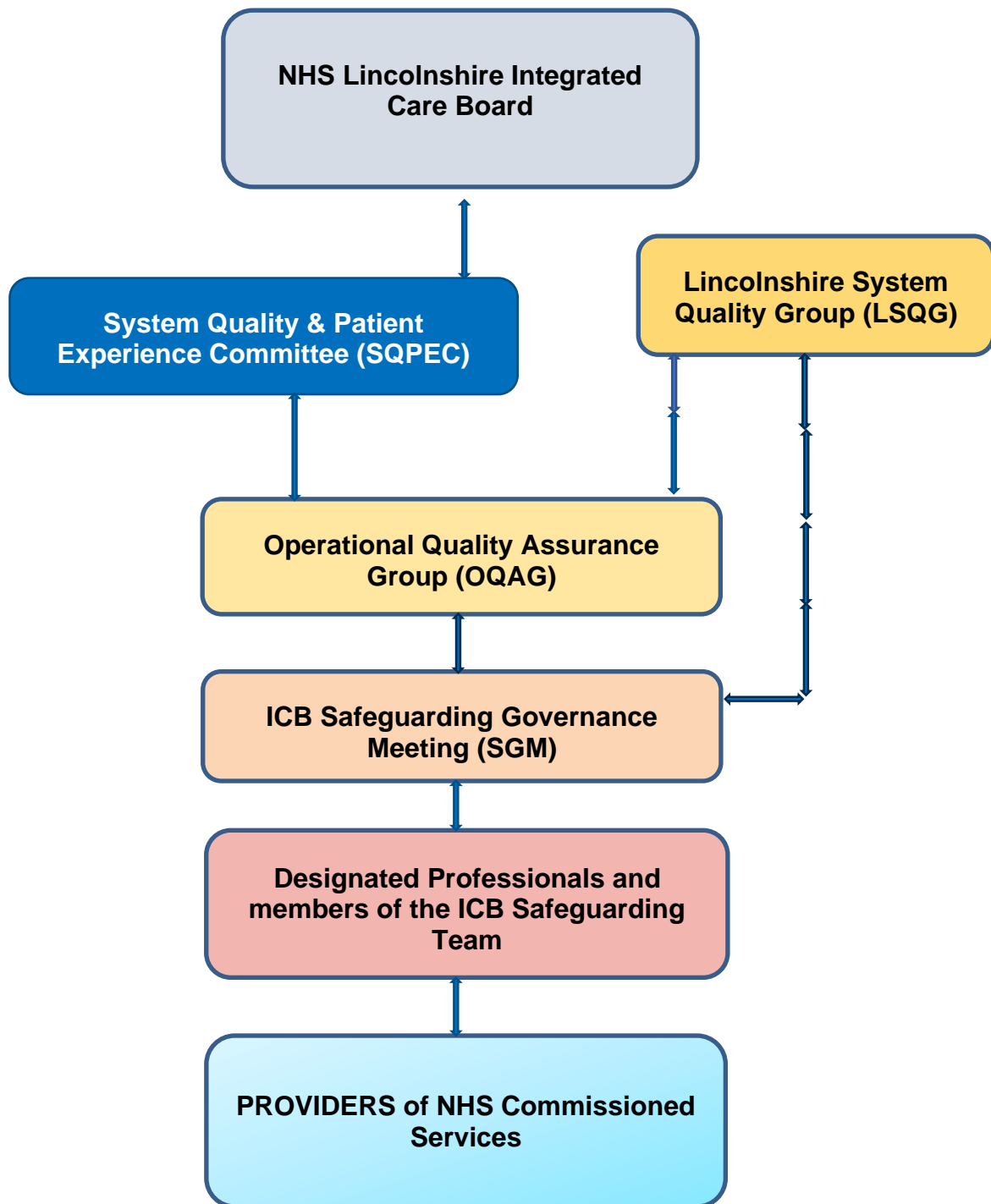
Implementation: The team has been fully engaged with all safeguarding investigations, multi-agency case reviews and safeguarding practice reviews. There have been challenges however in evidencing that learning for primary care has been embedded in all practices. Dip sample audits have been completed, which will continue, and findings will be reported into the Primary Care Oversight Group. Actions identified through the audit process are addressed by the safeguarding team, learning shared via safeguarding training and GP forums and support provided if required.

Assurance: As an ICS, how we obtain assurances from our health partners has changed. The ICB safeguarding team worked closely with contract management to progress these changes and implement new processes. For larger NHS providers, assurances are received via reports/ papers from internal meetings, partnership meetings and cross references with other ICB teams; smaller NHS providers complete a safeguarding self-declaration. In 2023-2024 the team attended safeguarding assurance meetings and worked closely with health safeguarding leads and partner agencies for health and social care. This work feeds into wider governance and assurance processes for both the ICB and the wider health system.

The ICB and local authority safeguarding team meets with the health providers safeguarding leads to discuss open safeguarding enquiries (Section 42 Care Act 2014) monthly. Assurances are obtained on how enquiries are being progressed and the actions taken to mitigate risks and to identify any themes and trends.

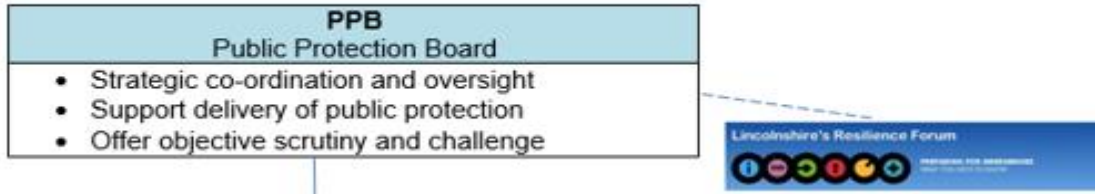
Assurance for care homes and home care providers is obtained through attendance to Service Quality Review (SCR) meetings. ICB safeguarding and other colleagues from across the system, for both health and social care, discuss care home and home care providers that are requiring additional oversight and support. Where risks are identified safe and welfare checks are carried out by system partners and where necessary suspension of placements will be imposed.

ICB Safeguarding Governance Structure.



Governance structure of the Safeguarding Boards.

Public Protection – Outline/Headline Structure



<h3>Lincolnshire Safeguarding Adults Board (LSAB)</h3>	<h3>Lincolnshire Safeguarding Children Partnership (LSCP)</h3>
<p>WHAT</p> <p>HOW WHEN WHO</p> <p>Task & Finish Groups</p> <ul style="list-style-type: none"> Prevention & Early Help (TAP, SAH) To cover areas within the strategy as and when required Serious Incidents Review Group (Reviewers - Learning & Development, including Learning Disability Mortality) 	<p>SCRUTINY</p> <ul style="list-style-type: none"> Assurance Executive (LCC, Health, Police representatives, Chair Independent) Strategic Management Group (Chair: Independent, Vice Chair: LSCB Member) Operational Delivery Group (Chair: Independent, Vice Chair: LSCB Member) Policy, Procedure, Education and Training (PPET) Significant Incident Review Group (SIRG) Education Sub Group (ESG) Child Death Overview Panel (COOP) Child Exploitation (CE) Quality Assurance Children's Adults & Safer Lives Partnership
<h3>Safer Lincolnshire Partnership (SLP)</h3>	<h3>Lincolnshire Domestic Abuse Partnership (LDAP)</h3>
<p>Strategy Board</p> <p>Statutory Duties</p> <ul style="list-style-type: none"> Crime & Disorder CPG Anti-Social Behaviour CPG Drugs & Alcohol CPG Reducing Reoffending CPG Serious Violence CPG Information Sharing / Strategic Assessment <p>Evidence Based Focus Areas</p> <ul style="list-style-type: none"> Fraud: Digitally Enabled Fraud and Identity Neighbourhood Anti-Social Behaviour County Lines & Drug Related Deaths IOM, Women's Strategy & Transition Public Place SV, Male on Male Violence, Sexual Offences, Geographical Pockets of Violence, Homicide Memo of Understanding, Formalise Data Sharing, Capacity 	<p>Domestic Abuse Meeting Structure</p> <ul style="list-style-type: none"> LCC DA Programme Board DA Strategic Group* (SLP*, LSAB*, LSCP*) DA Operational Group MARAC Steering Sub Group (MARAC Meetings) DHR/SIRG Sub Group (DHR Decision Panel, DHR Panel Meetings) Q Communications Sub Group Safe Accommodation

Examples of Strengthened Safeguarding Practice.

Families First for Children Pathfinder.

In 2023 Lincolnshire County Council was chosen by the government to be a wave one Local Authority Families First for Children Pathfinder site as part of the governments children's social care implementation strategy, Stable Homes, Built on Love. Pathfinder sites will design and test radical reforms across 4 key reform strands, to be delivered as a whole system transformation. The strands include multi-agency safeguarding arrangements; family help; child protection; and family networks.

Co-design with local statutory partners has been key to this work and the ICB has worked in partnership with the local authority and police to lead and deliver reform across the Lincolnshire system.

Pathfinder is an exciting opportunity for Lincolnshire, work to progress this will continue into 2025.

[Families first for children \(FFC\) pathfinder programme and family networks pilot \(FNP\) - GOV.UK \(www.gov.uk\)](https://www.gov.uk/government/programmes/families-first-for-children-pathfinder)

Implementation of prepaid prescriptions for Care Leavers:

Research provides extensive evidence of the poorer health outcomes, both physical and mental, and financial disadvantage experienced by Looked After Children and Care Leavers when compared to their non-care experienced peers. NHS Lincolnshire ICB has continued to work in partnership with the local health system, the local authority and Barnardo's to support and improve services for this cohort of vulnerable children and young people. In 2022, the ICB safeguarding team proposed allocation of funding by the ICB for pre-payment prescription certificates for Care Leavers aged 18 - 25 years who would otherwise not be entitled to free prescriptions. The proposal was agreed, and the scheme was rolled out across Lincolnshire in August 2023.

Transitional Safeguarding

Transitional safeguarding is about recognising that the needs of young people do not change or stop when they reach 18, although the laws and services supporting them often do. It is an approach to safeguarding that moves through developmental stages, rather than just focusing on chronological age, building on best practice, and learning from both adult and children's services.

In April 2023, the safeguarding team presented a paper to the LSCP for consideration to progress and embed transitional safeguarding across the Lincolnshire system. The proposal was agreed, and a task and finish established. Work is progressing and includes, identifying and agreeing a definition, commencing data exploration and service mapping, completion of mapping work and agreement of cohort and development of transitional safeguarding charter.

Safeguarding Training.

GP Forums

The Named GP for safeguarding for the ICB has facilitated GP forums during 2023-2024. This forum provides the opportunity for primary care staff, specifically the safeguarding lead GPs within each GP practice across Lincolnshire to be updated with current practices, case discussion and processes and for sharing of best practice.

DA Training for ICB Staff

The ICB safeguarding team has delivered five training sessions during 2023-2024 to raise the awareness of domestic abuse.

The training provides basic knowledge of the support available if they or another employee is experiencing domestic abuse.

GP Newsletter

The ICB safeguarding team have produced a bimonthly newsletter that is cascaded across primary care. The contents provide a variety of updates to ensure staff are fully informed on best practice to safeguard adults and children, safeguarding training opportunities and details on how staff can be supported to carry out their roles.

Supporting Campaign Awareness

The ICB safeguarding team and ICB communications team have supported several safeguarding events led by Lincolnshire partners including Domestic Abuse '16 days of action' (November 2023) ICON Awareness Week (September 2023), and Safeguarding Adults Week (November 2023).

Mental Capacity Act

The Named GP for safeguarding with the support of the Head of Safeguarding Adults and Primary Care have delivered Mental Capacity Act training as part of the Level 3 Safeguarding Children and Adults training sessions to primary care staff including trainee GPs. This is to ensure that Lead GPs are compliant as per the Intercollegiate Guidance documents.

Level 3 Safeguarding Training

The Named GP for safeguarding and the Head of Safeguarding Adults and Primary Care and trainee GP's, deliver level 3 safeguarding adults and children training to primary care in collaboration with the LMC and Lincolnshire Police (Prevent agenda). The training is continually reviewed and updated to include local and national guidance and reflect learning from local and national safeguarding reviews. The ICB safeguarding team also develop and deliver level 3 safeguarding adults and children training to delegates on the GP Training Programme in Lincolnshire.

Impact of Safeguarding Training:

Safeguarding Level 3:

“I updated our ‘was not brought’ policy as a result of the recent child and adult safeguarding course I attended, the example policy I received after the training from the safeguarding team was very useful, thank you.”

“I wasn’t looking forward to a whole day of training, but it turned out to be much more interesting than I thought, an engaging and informative session, thank you.”

“Best safeguarding update ever”

“Just wanted to make you aware of a MARAC referral that I have just emailed over. Thank you for the training you have provided which meant that I felt confident enough to do this!”

Safeguarding Level 3 GP trainees:

“Excellent update and refresher. Presenters clearly enthusiastic about the topic and know it very well. Very engaging!”

“I learnt new information on safeguarding adults and children. Relevant information needed for GPs passed on effectively.”

“Delivered excellently! All sessions were done very well. Interaction with the audience was open and great.”

“The sessions contained a lot of useful information. I particularly liked the real-life cases as they make things more relatable and real.”

Safeguarding Partnerships. Work undertaken 2023-2024 ([Glossary of terms page 22](#)).

Lincolnshire Safeguarding Adult Board: Under the terms of the Care Act (2014), each local authority must set up a safeguarding adult board, with statutory partners from the local authority, police, and ICB. The safeguarding adult board leads on adult safeguarding arrangements across its locality, overseeing and coordinating the effectiveness of the safeguarding work of its member and partner agencies.

The ICB safeguarding team have continued to participate as key statutory partners in all aspects of the Local Authority Safeguarding Adult Board (SAB)

The prevention priorities included in the LSAB's wider 3-year strategic plan: [Lincolnshire Safeguarding Adults Board Strategic Plan – Introduction - Lincolnshire County Council](#) have been informed by a joint needs assessment with the other statutory safeguarding partnerships in Lincolnshire, supplemented by a detailed analysis of Lincolnshire's safeguarding adult enquiries as reported in the national NHS Digital' Safeguarding Adult Collection (SAC). In addition to learning from Safeguarding Adult Reviews (SAR's). These prevention priorities are also linked to the LSAB Risk register.

One of the ways they do this is by agreeing prevention priorities that will help to keep people safe and avoid safeguarding risks escalating. These priorities are set out in the prevention strategy which makes it clear that in Lincolnshire we will not tolerate abuse, exploitation, or neglect. Working together we will continue to improve collective wellbeing and prevent abuse and neglect: [PowerPoint Presentation \(moderngov.co.uk\)](#).

The ICB safeguarding team continue to participate in LSAB and Safety Lincolnshire Partnership (SLP) subgroups across Lincolnshire including those focusing on transitions, self-neglect, Safeguarding Adults Reviews (SARs), quality and performance, learning and development, and policies and publications. The ICB safeguarding team enable learning from SARs to be discussed and disseminated across health partners in supporting the LSABs to evidence implementation of learning into practice across Lincolnshire.

Safeguarding Adults Reviews

The ICB safeguarding team have been involved in 2 Safeguarding Adult Reviews (SARs) between April 2023 and March 2024. One of which was concluded in August 2023 and the second one was commissioned by the Board in March 2024. Methodologies for both involved the use of practitioner learning events. The safeguarding team provided comment to reports and recommendations and engaged GPs to ensure the primary care voice was heard in informing best practice. The safeguarding team also supported health partners to provide challenge and ensure recommendations and actions were SMART.

The concluded SAR in this reporting period identified the following themes:

1. Self-neglect and hoarding
2. Mental capacity
3. Professional curiosity

A learning brief, protocols and training tool kits were produced by the LSAB as a result of this review. These were disseminated to providers and GPs and the links to resources and local contacts shared and used in the GP training packages.

Lincolnshire Safeguarding Children Partnership: The task of organising local safeguarding arrangements is shared by three statutory partner agencies - local authority, police, and ICB. The Children Act (2004) places a duty to establish multi-agency safeguarding arrangements for the local child population, with other relevant agencies as they deem appropriate. The partners must work together to safeguard children and promote the welfare of all children in their area, and to monitor and ensure the effectiveness of those arrangements. The statutory partners are equally accountable for the system they create.

The Lincolnshire Safeguarding Children Partnership has agreed the following priorities:

Tackling Child Exploitation

CEM Subgroup & CSA Working Group meet on a regular basis to drive forward the work in relation to 'Operational MACE'.

Enhancing the emotional wellbeing of children and young people

The ICB works with partners to ensure a joined-up approach to providing effective advice, training, and resources in supporting children and young people to maintain their emotional wellbeing.

Identify and reduce the impact of neglect on children and young people

Neglect steering group established, of which the ICB is a member, which has worked on developing tools, guidance, and training to support practitioners to best identify neglect. A neglect audit was completed in 2023, the findings of which informed this work.

Promoting healthy and respectful relationships

Education subgroup and partners work with children and young people to develop an understanding of what a healthy and equitable relationship is within the context of their family, friendships, education setting, community, and online world.

Identify and reduce the impact of physical and sexual harm

CSA Steering & working group, CEM subgroup; The LSOP has worked alongside the Centre of Expertise on Child Sexual Abuse with the aim of reducing the impact of child sexual abuse through improved prevention and a better-informed response. A suite of resources and best practice guidance has been developed to support more effective professional practice, and support for frontline practitioners, in response to child sexual abuse.

Child Safeguarding Reviews

The Designated Doctor was a panel member for the 4 **Rapid Reviews** undertaken in Lincolnshire between March 2023 and April 2024, one of which progressed to a Child Safeguarding Practice Review which has not yet been published. The team also supported 2 out of area reviews during this period.

Some of the themes identified in the Rapid Reviews include:

- Review of Lincolnshire's Neglect strategy and the implementation of a neglect tool.
- The roll out of ICON to non-health agencies
- Promotion of the use of the clutter scale and hoarding protocol
- Reinforcement that escalation is a positive action to resolve professional disagreements.
- Promotion of the Early Help offer and TAC arrangements.
- ensuring that the professional network around the family includes all who can affect change to improve outcomes and bring in expertise.

Darren & Bethany was a **Joint Board Review** (LSCP and LDAP) and was published March 2024. Key themes include partnership use and knowledge of police ancillary processes, understanding of stalking, harassment and coercive controlling behaviour and understanding that DA is always harmful to children. Understanding and reducing the risks of perpetrators to victims and their children of DA. Improvements to local Child in Need processes and inclusion of multi-agency partners. Improvements to multi-agency information sharing to also include the voluntary sector information.

When a child or young person under the age of 18 years dies, the circumstances of their death are reviewed by the LSCP **Child Death Overview Panel (CDOP)**. As a statutory multi-agency and multi-disciplinary panel, CDOP provides an opportunity to identify any modifiable factors associated with the death and use this learning to reduce risks to other children and young people.

The Designated Doctor is the chair for these meetings. The role includes contribution of clinical expertise to the review and to disseminate learning across the health economy, including within primary care.

7 Minute Briefing – CDOP annual report 2022/23.

What is CDOP?

The Lincolnshire Child Death Overview Panel (CDOP) reviews the death of every Lincolnshire child to see if any lessons can be learned. We are aiming to prevent future deaths where we can and to improve care and support for children, their families, and communities.

The number of child deaths in Lincolnshire notified to CDOP between 1st April 2022, and 31st March 2023 was 33. Lincolnshire CDOP has completed 35 child death reviews during this period (another 30 cases remain open, with 18 awaiting the outcome of a coroner's inquest. Nationally there remain long delays in the coronial system).

Quick facts:

- 66% of all deaths reviewed were male.
- 57% of deaths were under one year of age.
- 88% of deaths were of white British ethnicity, 6 % white other and 6% other mixed background.
- The commonest place of death was a neonatal ward/unit, as is the case nationally.
- 5 children were known to have a disability.
- 20% children were known to social care, comparable to the national average of 21%.
- The commonest cause of deaths is a neonatal or perinatal event, for example, being born prematurely, or a genetic/congenital anomaly.

Modifiable factors

These are factors where, if actions could be taken through national or local interventions, the risk of future child deaths could be reduced.

Modifiable factors were identified in 40% of the deaths reviewed (national average is 39%). The commonest factor is still cigarette smoking during pregnancy or within the household - this is also the commonest modifiable factor nationally.

Adverse childhood experiences (ACEs)

This is the first year the presence of ACEs has been considered in all child deaths. 8 children were identified to have ACEs; the highest number of ACEs in a single case was 7. The commonest ACEs found were parental separation and mental illness in a close family member.

CDOP recommendations:

1. CDOP identified a lack of regional availability of neonatal intensive care cots escalating this to the local neonatal network, with plans being made to increase the number of cots.
2. Public Health and ICB colleagues supported increased COVID-19 vaccination during pregnancy.
3. CDOP recommended a targeted weight loss service for overweight and obese pregnant women.

Lincolnshire Domestic Abuse Partnership (LDAP): The Domestic Abuse Act (2021) sets standards and promotes best practice. It places domestic abuse on a statutory footing, increasing awareness and understanding and informing agency response to strengthen the support provided for victims. Tier one local authorities have a statutory responsibility to appoint a local Partnership Board for domestic abuse – LDAP was established in 2022. The ICB is a key statutory partner of this partnership.

The challenge of ending domestic abuse involves breaking cycles of abuse, preventing future incidents, and influencing society to change cultural norms. The Domestic Abuse Needs Assessment 2020, the Strategic Assessment, Community Safety and Safeguarding in Lincolnshire 2021 documents identify many opportunities.

The Lincolnshire Domestic Abuse Partnership (LDAP) works in a committed and collaborative way to stop domestic abuse through education and intervention. The Partnership practices a continual cycle of domestic abuse need assessments at three-yearly intervals. An intelligence-led approach allows continual growth and understanding in identifying and responding to changes, ensuring the right services are in the right place. The Partnership employs reflective practice to continuously improve.

The creation of a “survivor network” will help support people more effectively, making change that really matters to people. [The Domestic Abuse strategy 2021-2024](#) sets out shared ambitions and key priorities for the LDAP and outlines key areas of action over the next 3 years:

- To invest in a business intelligence picture for Lincolnshire, developing a continual cycle of data from partner agencies. Evaluation and performance measuring against the strategy and delivery plan [Domestic Abuse - Lincolnshire Health Intelligence Hub \(lhih.org.uk\)](#)
- To invest in community and neighbourhood engagement including a survivor network, business engagement, voluntary sector, and community groups
- To invest in safe accommodation for domestic abuse victims and their children, including the sanctuary scheme/target hardening
- To invest in early intervention, including school and early years, creative use of health settings, tackling culture and language and working collaboratively across the tri board in Lincolnshire
- To develop a perpetrator response to meet the needs appropriate for a rural community
- These priorities are an inclusive strategy relevant to all victims of domestic abuse

The ICB safeguarding team continue to actively participate, as statutory partners, in the LDAP subgroups, DHRs and the MARAC process alongside system partners.

Domestic Homicide Reviews

Between April 2023 and March 2024, the ICB safeguarding team participated in 16 Domestic Homicide Reviews (DHR). There has been a notable increase in the number of DHRs being commissioned in Lincolnshire, namely eight during this period, compared to three in the previous year.

The safeguarding team are statutory panel members for all DHRs, including agreeing final reports and recommendations for across agency learning.

The safeguarding team has supported Lincolnshire GPs in the completion of the chronologies and individual management reports (IMRs) that inform these reports and has encouraged GP involvement in the process.

The safeguarding team has also contributed to the Home Office DHR consultation.

The DHRs have evidenced the complexity of cross border working, information sharing, suicide, bidirectional abuse, mental health, care leaver status and adverse childhood experiences (ACEs).

The learning from these reviews informs the safeguarding training we develop and deliver to the ICB and GPs.

Review of Priorities set for 2023-2024.

We planned ...	We did ...
<p>Review of safeguarding arrangements of commissioned services against statutory safeguarding responsibilities.</p>	<p>As an ICS, how we obtain assurances from our health partners has changed and is now received via reports/ papers from internal meetings, partnership meetings and cross references with other ICB teams. In 2023-2024 the team attended safeguarding assurance meetings and worked closely with health safeguarding leads and partner agencies for health and social care. Attended monthly Section 42 (Care Act 2014) meetings with health providers to discuss individual cases and to identify any themes. Represented the Service Quality Review meetings to share and review care home and home care providers that require additional oversight and support.</p>
<p>To support the ICS with the implementation of transitional safeguarding for young people (and their carers where appropriate).</p>	<p>The safeguarding team presented a paper to the LSCP for consideration to progress and embed transitional safeguarding across the Lincolnshire system. The proposal was agreed, and a task and finish group commenced, which, following further discussion, is being led by the LSAB. The ICB safeguarding team is represented on this group. Further information about this has been provided on p.10, under Examples of Strengthened Safeguarding Practice.</p>
<p>ICB staff, including the executive team, will be trained to embed safeguarding within the commissioning and assurance process and are able to recognise and report safeguarding concerns.</p>	<p>The safeguarding team has continued to deliver safeguarding training to primary care and ICB staff (see page 11 for further information).</p> <p>A training package for the executive team has been developed by the Designate Dr and is on the agenda for a Board Development Session in October 2024.</p>

We planned ...	We did ...
<p>To support and facilitate safeguarding practice for primary care.</p>	<p>The team has continued to deliver support and expert safeguarding advice to our colleagues in primary care through the delivery of safeguarding training, the facilitation of GP forums, bi-monthly safeguarding newsletter, and support in conducting chronologies and reports for safeguarding statutory reviews.</p> <p>In April 2023 the commissioning of Podiatry, Optometry and Dentistry (PODs) was transferred to ICBs for NHS England. The Designated Nurses from the 5 ICB's in the East Midlands, including Lincolnshire, agreed a regional approach and together developed a Joint Safeguarding Children and Adult Self-Assessment Tool, which has been disseminated to all PODs across the region. The self-assessment tool has been designed to enhance and improve POD compliance and arrangements to safeguard patients.</p>
<p>Be responsive to the national and local safeguarding agenda, including the dissemination of learning from safeguarding reviews.</p>	<p>The safeguarding team attends local, regional, and national safeguarding meetings and is responsive to the ever-increasing safeguarding agenda and associated requirements. This includes the dissemination of learning from safeguarding reviews, both local and national, via training, forums, and newsletters for primary care.</p> <p>In response to findings from the National Panel's report into the deaths of Star Hobson and Arthur Labinjo-Hughes in 2022, a review of Lincolnshire processes was completed. As a result, during this reporting period, the ICB safeguarding team has worked closely with the health safeguarding system and partner agencies to progress a business case to improve health representation at strategy discussions.</p>

We planned ...	We did ...
<p>Contribute to the work of the LSCP, LSAB, SLP and LDAP and their safeguarding strategic business plans and priorities and provide support to the boards to meet their statutory duties.</p>	<p>NHS Lincolnshire ICB is represented at all levels of work of the LSCP, LSAB, SLP and LDAP. It provides leadership for safeguarding through attendance to the strategic boards and sharing specialist knowledge and expertise through the active participation of the safeguarding team in sub-groups, audit processes, statutory reviews, and specific task and finish groups.</p>
<p>Support the implementation of an information sharing agreement between designated professionals, health, and wider partners to prevent and protect children, young people, and adults from harm or abuse.</p>	<p>The safeguarding team has been working closely with Information Governance to progress ISA and DPIAs with primary care to enable access for the team to medical records (on SystemOne – S1) to support safeguarding functions and responsibilities, such as safeguarding statutory reviews, multi-agency risk assessment processes. Work also progressed for access to a S1 safeguarding module, for the clinical members of the safeguarding team, to fulfil safeguarding functions and support primary care.</p> <p>Child Protection Information Sharing (CP-IS) Service shares child protection information between social care and health for Children in Care, children on a child protection plan, including pregnant women with an unborn child protection plan.</p> <p>CP-IS is fully implemented in emergency and unplanned care settings such as emergency departments and GP Out of Hours services. With the full support of the ICB, phase 2 of CP-IS is being rolled out over the coming months to GP practices, sexual health services, termination of pregnancy services, child and adolescent mental health services, dentistry (emergency and planned care) and 0-19 services. It is already in place at community paediatrics, where Lincolnshire was one of the early adopters selected by NHS England.</p>

Future Priorities and Objectives.

- Build on the ICB safeguarding primary care role by arranging face-to-face events to support networking and system development in this area.
- Develop a System Learning Approach with quality team colleagues to ensure that recommendations from statutory safeguarding reviews are implemented and embedded in practice and policy.
- Provide system leadership for safeguarding, capturing the voice of our population and workforce to support service resilience and adaptation to working with partners across the ICS.
- Support Continuing Health Care colleagues in managing deprivation of liberty safeguards in the community.
- Support the delivery of the multi-agency arrangements for the Serious Violence Duty, which includes implementing the Domestic Abuse Act (2021) strategies across Lincolnshire.
- Progress system development in relation to Children in Care and Care Leavers which will include enhanced health offers and pathways.

Glossary.

ACEs	Adverse Childhood Experiences
CDOP	Child Death Overview Panel
CEM	Child Exploitation and Missing
CP-IS	Child Protection – Information Sharing
CSA	Child Sexual Abuse
CSPR	Child Safeguarding Practice Review
DA	Domestic Abuse
DHR	Domestic Homicide Review
DPIA	Data Protection Information Agreement
ICB	Integrated Care Board
ICON	Prevention of Abusive Head Trauma Campaign
ICS	Integrated Care System
ISA	Information Sharing Agreement
LA	Local Authority
LDAP	Lincolnshire Domestic Abuse Partnership
LSAB	Lincolnshire Safeguarding Adults Board
LSCP	Lincolnshire Safeguarding Children Partnership
MARAC	Multi-Agency Risk Assessment Conference
PODs	Podiatry, Ophthalmology and Dentistry
NHSE	NHS England
SAB	Safeguarding Adult Board
SAC	Safeguarding Adult Collection
SAR	Serious Safeguarding Adult Review
SLP	Safer Lincolnshire Partnership
SMART	Specific, Measurable, Achievable, Relevant, Timely
SQR	Service Quality Review
S1	SystemOne

Conclusion.

2023-2024 has been a busy period for the ICB safeguarding team, which has worked with local, regional, and national colleagues to respond to the ever-increasing safeguarding agenda. This annual report details some of the work completed by the safeguarding team to best deliver its statutory safeguarding duties, working with partners to safeguard individuals at risk of abuse and neglect.

The ICB safeguarding team has provided excellent support and made positive contributions to the partnership arrangements across the system, demonstrating safeguarding health expertise and guidance. The focus for 2024-2025 is to continue to work in collaboration with safeguarding partners and Integrated Care System partners to ensure that safeguarding is core business within all aspects of our partnership work.