

# NHS Lincolnshire Integrated Care Board

# **Annual Safeguarding Report**

## **Authors**

Nicola Wilkinson, Designated Nurse for Safeguarding Adults, Children and Looked After Children.

Gail Colley-Bontoft, Deputy Designated Nurse for Safeguarding Adults, Children and Looked After Children.

**1<sup>st</sup> April 2024 – 31<sup>st</sup> March 2025.**

## Table of Contents

Foreword.....	2
Executive Summary .....	3
Our Vision.....	4
Key Areas of work 2024 – 2025 .....	4
Safeguarding Team Charter .....	5
Overview of NHS Lincolnshire ICB Compliance .....	6
- Position on Amber ratings.....	7
ICB Safeguarding Governance Structure .....	8
Governance Structure of the Safeguarding Boards .....	9
Examples of Strengthened Safeguarding Practice .....	10
Safeguarding Training .....	12
- Impact of Safeguarding Training.....	13
Safeguarding Partnerships – Work Undertaken 2024 - 2025.....	14 - 19
Review of Priorities Set 2024 - 2025.....	20 - 21
Future Priorities and Objectives .....	22
Conclusion .....	22
Glossary .....	23

## Foreword.



As the Chief Nurse for NHS Lincolnshire Integrated Care Board, and the Executive Lead for safeguarding, I am honoured to share our ICB Safeguarding Annual Report for the year 2024-2025.

NHS Lincolnshire Integrated Care Board (LICB) strongly believes that everyone has the right to be free from abuse and protected from harm. A strong commitment to prevention and early intervention is vital to safeguard our children, families, and adults. We continue to implement national guidance, system connectivity and drive our engagement within our multi agency partnerships, with a commitment to learning from safeguarding reviews and

incidents to improve outcomes for our population across Lincolnshire whilst holding the voice of our population central to our focus and delivery.

Enshrining and promoting that right is a core obligation of the NHS and all its employees. The ICB has a duty to work in partnership with other relevant organisations to ensure people of all ages live their life free from harm. This Annual Safeguarding Report outlines the work of the ICB in meeting those obligations.

2024-2025 has been a year which has seen much change, both within our organisation and across national and local health and care services and systems. As is outlined in the report, safeguarding legislation, processes, and practice continue to develop and advance. This report provides assurance that the ICB is meeting those ongoing challenges, providing health service leadership towards safeguarding children and adults-at-risk across Lincolnshire.

Through our Designated Professionals, Named GP, and the LICB safeguarding team, commissioned services and partner organisations have access to expertise and support. In addition, many other ICB staff significantly contribute towards our shared ICB safeguarding commitment. Moving forward, what is certain is that the safeguarding landscape will continue to change. We seek to build upon this year's achievements, progressing and meeting our safeguarding priorities into the next, and future years.

Martin Fahy  
Chief Nurse  
NHS Lincolnshire Integrated Care Board

## Executive Summary.

This annual report covers the period between 1<sup>st</sup> April 2024 and 31<sup>st</sup> March 2025 and details how the NHS Lincolnshire Integrated Care Board (ICB) safeguarding team has worked to best deliver the statutory safeguarding duties.

The team delivered these duties throughout 2024-2025 in relation to safeguarding children, young people and adults at risk by working proactively to support local, regional, and national safeguarding priorities and respond to the ever-evolving safeguarding landscape, and has worked closely with partners, both within health and across wider agencies.

Lincolnshire ICB was able to demonstrate that there were appropriate safeguarding governance systems in place for discharging their statutory safeguarding duties and functions in line with, but not exclusive of, the following key legislation:

- Care Act 2014
- Children Act 1989 and 2004
- Children and Social Work Act 2017
- Working Together to Safeguard Children 2023
- Domestic Violence Act 2021
- Prevent Duty 2023
- Serious Violence Duty 2023

The NHS England Safeguarding and Accountability and Assurance Framework (SAAF 2024) provided the strategic framework for ensuring system oversight of safeguarding priorities. Assurance and oversight of these duties is maintained by LICB through its formal quality governance arrangements. LICB was compliant with all the NHS England (NHSE) monitoring requirements.

Safeguarding is a collective responsibility, whilst individuals and organisations have distinct roles, the system cannot operate effectively unless individuals and organisations work together. Oversight of local partnership safeguarding arrangements is provided by the Lincolnshire Safeguarding Adults Board (LSAB), the Safer Lincolnshire Partnership (SLP), the Lincolnshire Domestic Abuse Partnership (LDAP), and the Lincolnshire Safeguarding Children Partnership (LSCP). NHS Lincolnshire ICB is represented at all levels of work within these, providing leadership for safeguarding through attendance to the strategic boards, and sharing specialist knowledge and expertise through the active participation of the ICB safeguarding team in sub-groups, audit processes, statutory reviews (Child Safeguarding Practice Reviews, Serious Adult Reviews and Domestic Abuse Related Death Reviews), and specific task and finish groups.

The ICB safeguarding team have attended regional and national NHSE meetings and forums, disseminating learning and considering the implications of findings for the Lincolnshire system.

The team has continued to deliver support and expert safeguarding advice to our colleagues in primary care through the delivery of safeguarding training, the facilitation of GP forums, a bi-monthly safeguarding newsletter, and providing support in conducting chronologies and reports for safeguarding statutory reviews.

## Our Vision.

Our vision is for the population of Lincolnshire to have access to health services that safeguard, promote, and protect individual human rights, independence, and wellbeing. Working in partnership the ICB will seek to secure assurance that individuals at risk are safeguarded against abuse, neglect, discrimination, poor treatment and are treated with dignity and respect.

## Key Areas of Work for 2024-2025.

- Embedding learning from Statutory Safeguarding Reviews - Rapid Reviews, Child Safeguarding Practice Review's (CSPR), Safeguarding Adult Review's (SAR), Domestic Abuse Related Death Reviews (DARD reviews).
- GP safeguarding training.
- Complex safeguarding Case Advice – Adults and Children.
- Focus on Refreshing the Implementation of ICON and raising awareness.
- Evidence collated for Section 11 which provided compliance against all the standards.
- Strong Partnership Working across the Integrated Care System.
- Developed a Safeguarding Human Resource Link.
- Continued implementation of Prepaid Prescription Scheme for Care Leavers.
- Mental Capacity Act Progressing Community Deprivations to the Court of Protection.
- Supporting the Families First for Children Pathfinder.
- Providing Health representation at Children Front Door Strategy Discussions.
- Supporting safeguarding multi-agency decision-making processes – Multi Agency Risk Assessment Conference's (MARAC), Strategy discussions, Channel.
- Representation at safeguarding boards: Lincolnshire Safeguarding Children Partnership (LSCP), Lincolnshire Safeguarding Adults Board (LSAB), Lincolnshire Domestic Abuse Partnership (LDAP) and Safer Lincolnshire Partnership (SLP).
- Management and oversight of Child Death Overview Panel (CDOP).
- Increase number of Care Home and Home Care Safeguarding Ambassadors with the support of system partners.
- Transitional safeguarding.
- Phase 2 CP-IS.
- Domestic Abuse training for managers to support staff that are employees.
- System One Safeguarding Unit and work with Primary Care to promote access.
- Supported the LSAB with Quality prevention initiatives.
- Development of bespoke audits with system partner to improve medicines governance in care homes.
- Risk feeding protocol.
- Court of protection cases for patients that lack capacity for care and treatment.

# Safeguarding Team Charter.

The safeguarding team charter reflects its core safeguarding values for 2024-2025. Our vision is for the population of Lincolnshire to have access to health services that safeguard, promote, and protect individual human rights, independence, and wellbeing. Working in partnership the ICB will seek to secure assurance that individuals at risk are safeguarded against abuse, neglect, discrimination, poor treatment and are treated with dignity and respect.

Excellence	Values	Relevant	Accessible and Inclusive	Leading
<p>We aim to achieve excellence in all that we do, always being principled, considerate, and respectful.</p> <p><b>We will demonstrate excellence by:</b></p> <ul style="list-style-type: none"> <li>• Taking pride in our work.</li> <li>• Taking accountability.</li> <li>• Being prepared to give, and to receive, constructive and timely feedback with the intention of improving performance or behaviour.</li> <li>• Taking the time to identify and celebrate success.</li> <li>• Striving to continuously improve our work, individually and as a team, always aiming to deliver what is expected of us in the best way that we can.</li> <li>• Proactively managing our workload and making effective use of our time.</li> </ul>	<p>We have strong values that determine our priorities and guide our decision making: integrity, accountability, diligence, perseverance, and discipline.</p> <p><b>We will demonstrate our values by:</b></p> <ul style="list-style-type: none"> <li>• Doing what we say we will and being clear in our expectations.</li> <li>• Leading by example, role modelling appropriate, professional behaviours.</li> <li>• Asking for help when we need it.</li> <li>• Complying with policies and procedures.</li> <li>• Seeking to understand issues that arise and working constructively to resolve them.</li> <li>• Giving due credit for the work of others.</li> <li>• Respecting each other/or our colleagues.</li> </ul>	<p>Our safeguarding processes are relevant to those at risk of abuse, neglect, omissions in care and harm.</p> <p><b>We will be relevant by:</b></p> <ul style="list-style-type: none"> <li>• Having open and accessible communication channels and messages.</li> <li>• Proactively looking for new and better ways of working.</li> <li>• Having a culture of frequent constructive feedback which is listened to and acted on.</li> <li>• Changing our communication style to best meet the needs of our audience.</li> <li>• Suggesting and trying out new approaches and taking acceptable risks.</li> <li>• Working collaboratively with partner agencies to safeguard individuals.</li> </ul>	<p>We foster a welcoming community and are proud to be part of the ICB. Our safeguarding processes are relevant, and we are diverse, inclusive, and accessible to all.</p> <p><b>We will be accessible and inclusive by:</b></p> <ul style="list-style-type: none"> <li>• Promoting a culture where diversity of thought is encouraged by actively supporting new ideas, approaches, and ways of working and support staff that ask for help.</li> <li>• Valuing and exchanging different knowledge and skills.</li> <li>• Challenging bullying, harassment, or discriminatory behaviour</li> <li>• Welcoming and supportive to our colleagues and stakeholders.</li> </ul>	<p>We are strong leaders. Bold, ambitious, and acting with integrity, always willing to listen.</p> <p><b>We will demonstrate leadership by:</b></p> <ul style="list-style-type: none"> <li>• Inspiring others to take accountability for achieving high performance and leading by example.</li> <li>• Welcoming feedback to support our development.</li> <li>• Actively aligning our work to the safeguarding strategy.</li> <li>• Always looking for opportunities to work collaboratively with others to achieve more together.</li> <li>• Being an ambassador for change and the opportunities that it provides.</li> </ul>

## Overview of NHS Lincolnshire ICB Compliance.

As per the Safeguarding Children, Young People and Adults at Risk in the NHS: Safeguarding Accountability and Assurance Framework (revised 2024), ICB's are responsible in law for the safeguarding element of the services they commission.

The table below illustrates our compliance against what is expected in the Framework.

AREA	STANDARD	RAG RATING
<b>Leadership and Organisational Accountability</b>	A clear line of accountability for safeguarding, reflected in the ICB governance arrangements, i.e., a named Executive Lead to take overall leadership responsibility for the organisation's safeguarding arrangements. In addition, a team made up of designated professionals for safeguarding children, looked after children, care leavers and adults.	
<b>Training</b>	Training all ICB staff to recognise and report safeguarding issues supported by a training strategy and compliance percentage in line with Intercollegiate Documents and national guidance for Prevent.	
<b>Safer Recruitment</b>	Clear policies describing the commitment and approach to safeguarding, including safe recruitment practices and arrangements for dealing with allegations against people who work with children and adults, as appropriate.	
<b>Inter-agency Working</b>	Effective inter-agency working with local authorities, the Police and third sector organisation's, including appropriate arrangements to co-operate with local authorities in the operation of safeguarding children's partnerships, Corporate Parenting Boards, Safeguarding Adults Boards and Health and Wellbeing Boards.	
<b>Implementation</b>	<p>Appropriately engaged with all safeguarding investigations, multi-agency case reviews or safeguarding practice reviews and that the evidence of learning has been embedded into practice.</p> <p><b>Position:</b> The team has been fully engaged with all safeguarding investigations, multi-agency case reviews and safeguarding practice reviews. Challenge however continues in evidencing that learning for primary care has been embedded in all practices. Audits have been completed, which will continue, and findings reported into the Primary Care Oversight Group. Actions identified through the audit process are addressed by the safeguarding team and learning shared via safeguarding training, GP forums and support provided to practices if required.</p>	

<b>Patient Engagement</b>	Ensures appropriate and accessible information is provided for its population in relation to how it discharges its duties for safeguarding.	
<b>Supervision</b>	Safeguarding supervision is available to staff in line with Intercollegiate Guidance.	
<b>Assurance</b>	As a commissioner of local health services, the ICB is assured that there are effective safeguarding arrangements in place in the services and gain assurance throughout the year to ensure continuous improvement.	

## Section 11

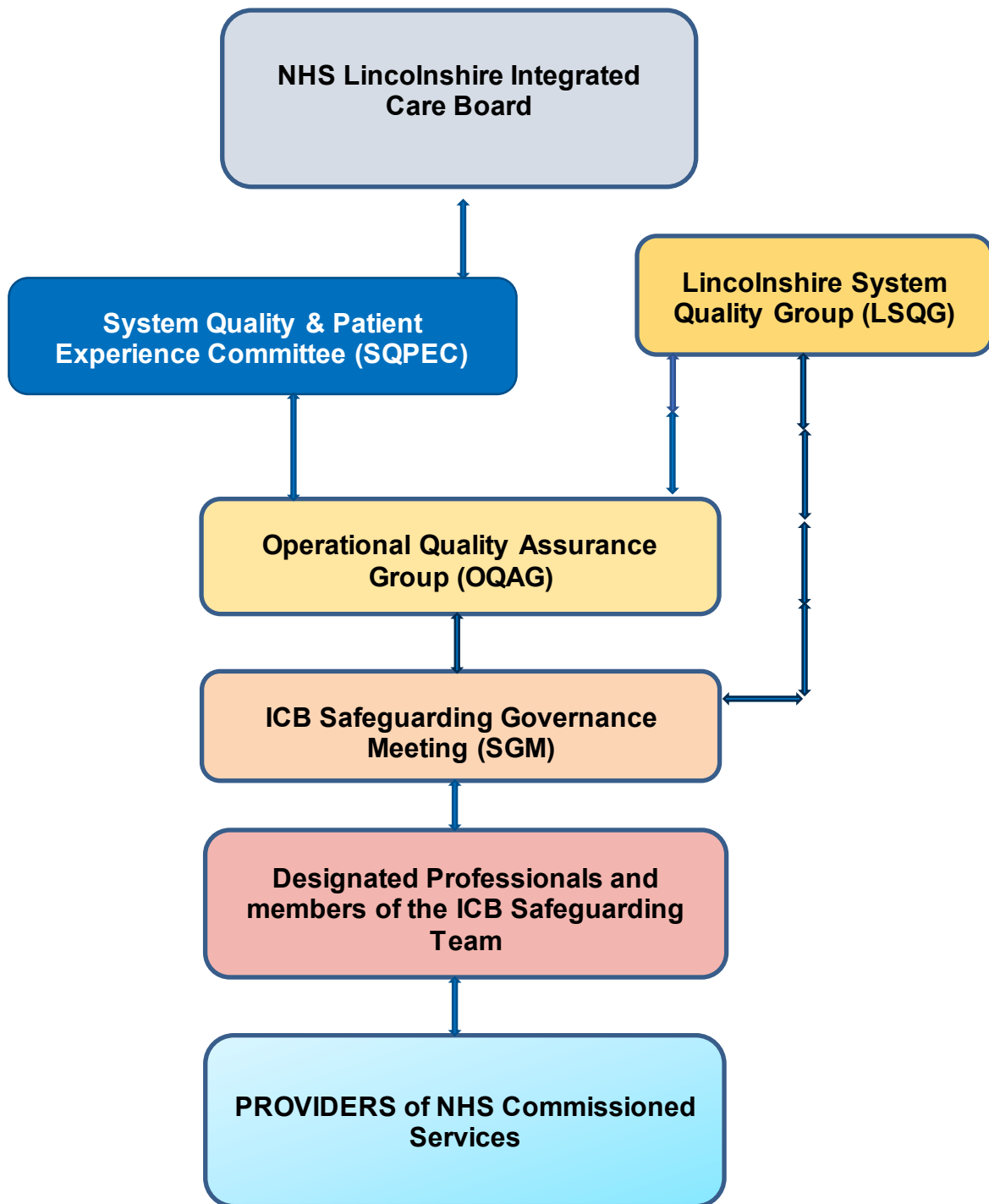
Section 11 of the Children Act 2004 creates a specific statutory duty for NHS bodies to ensure that they discharge their functions having regard to the need to safeguard and promote the welfare of children. Section 11 is undertaken every three years.

In 2024 LICB safeguarding team, on behalf of LICB, completed the LSCP Section 11 compliance audit, passing the audit with 100% of the criteria being rated as green,

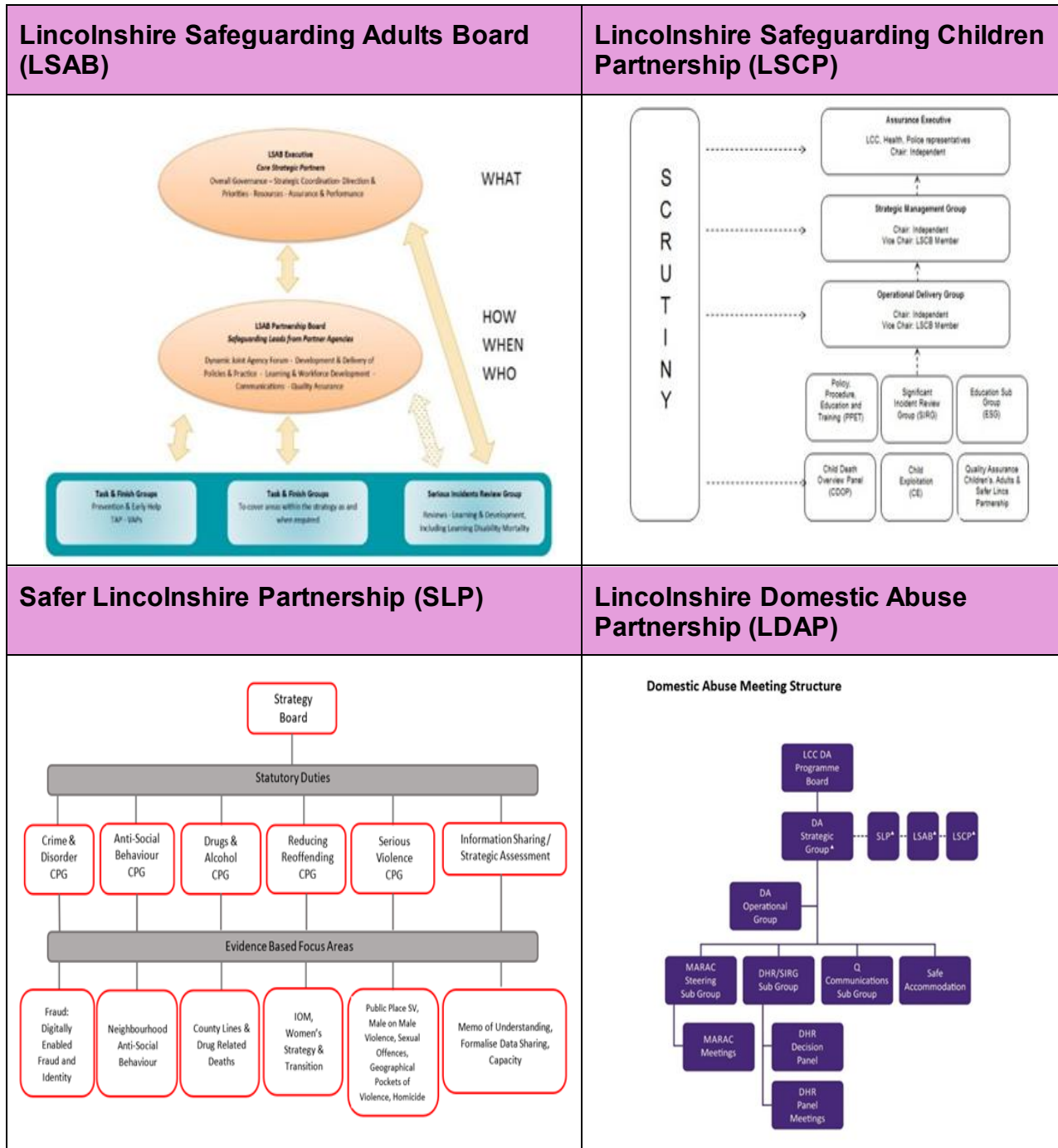
## NHS England

To monitor ICB safeguarding compliance, NHS England has implemented the Safeguarding Commissioning Assurance Toolkit (S-CAT) which is completed by the safeguarding team quarterly. LICB is fully compliant with S-CAT and meets regularly with the NHSE regional safeguarding team to discuss submissions and provide additional assurance if required.

# ICB Safeguarding Governance Structure.



# Governance structure of the Safeguarding Boards.



## Examples of Strengthened Safeguarding Practice.

### **Health representation at children's strategy discussions.**

A strategy discussion (strat) is convened when there is reasonable cause to suspect that a child is suffering or is likely to suffer significant harm and should include, as a minimum, attendance by local authority children's social care, the police, and health. Work has been ongoing across the Lincolnshire health system since 2022 to improve processes, with agreement in 2024 to recruit to additional posts, to sit in the ICB, Lincolnshire Partnership Foundation Trust (LPFT), and Lincolnshire Community and Hospitals Group (LCHG), to represent health in strats.

The ICB post was recruited to, and five day/ week representation commenced 06/01/25. Initial operational issues continue to be worked through, and recruitment to the other posts remains ongoing, but processes to share health information and support risk assessment and decision making to safeguard children and young people at risk of harm continues to improve.

### **System One access for LICB safeguarding team clinical staff.**

To support effective health representation to strategy discussions work was undertaken to enable clinical staff within the LICB safeguarding team to access GP records via the patient record system, SystemOne (S1). The aim of this is to facilitate the sharing of key health information to support safeguarding functions including multi-agency risk assessment and decision making, such as strats and MARAC, and statutory safeguarding reviews, including Rapid Reviews, Child Safeguarding Practice Reviews, Safeguarding Adult Reviews and Domestic Abuse Related Death Reviews.

Access to the S1 Safeguarding Module was enabled for LICB clinical staff in September 2024. Work to progress this has been lengthy and includes collaboration with Information Governance leads with Data Protection Impact Assessments (DPIAs) and Information Sharing Agreements (ISAs), and communication and support for GP practices. An increasing number of practices are signing the DPIA and are reporting the positives of this.

### **Implementation of prepaid prescriptions for Care Leavers.**

Research provides extensive evidence of the poorer health outcomes, both physical and mental, and financial disadvantage experienced by Looked After Children and Care Leavers when compared to their non-care experienced peers. LICB has continued to work in partnership with the local health system, the local authority and Barnardo's to support and improve services for this cohort of vulnerable children and young people. In 2022, the ICB safeguarding team proposed allocation of funding by the ICB for pre-payment prescription certificates for Care Leavers aged 18 - 25 years who would otherwise not be entitled to free prescriptions. The proposal was agreed, and the scheme was rolled out across Lincolnshire in August 2023. In 2024-2025 the safeguarding team continued to work with other agencies to promote the scheme, with ten Care Leavers applying, and subsequently being issued, a prepayment prescription certificate.

## **Complex Cases.**

The ICB safeguarding team has supported complex physical health intervention cases for adults, alongside other system health partners. Complex physical health case management provides a multi-agency and collaborative approach to the risk management of adults that lack capacity to make specific decisions for their care and treatment.

The aim is to provide a collaborative approach to challenging cases to improve information sharing, accountability, promote preventative working and improve engagement. This will keep risk low, improve quality of life, and prevent the need for more intensive crisis interventions in the future. Complex physical health case management supports professionals who often find themselves managing difficult and complex cases in isolation by creating a collaborative group or workers who can provide each other with ongoing support and guidance.

This has also included the co-ordination for individual cases that have required applications to the Court of Protection to authorise a plan of care to convey a person to hospital in their best interest to obtain medical treatment.

## **Families First for Children Pathfinder.**

In 2023 Lincolnshire County Council was chosen by the government to be a wave one Local Authority Families First for Children Pathfinder site as part of the governments children's social care implementation strategy, Stable Homes, Built on Love. Pathfinder sites design and test radical reforms across the 4 key reform strands: multi-agency safeguarding arrangements; family help; child protection; and family networks.

Throughout 2024-2025 the ICB has continued to support Pathfinder, through the implementation and evaluation phases. Work is now being focussed on 3 workstreams: multi-agency safeguarding arrangements, family help and the implementation of multi-agency child protection teams.

# Safeguarding Training.

## **GP Forums**

The Named GP for safeguarding for the ICB has facilitated quarterly safeguarding GP forums during 2024-2025. This forum provides the opportunity for primary care staff, specifically the safeguarding lead GPs within each GP practice across Lincolnshire to be updated with current practices, case discussion and processes and for sharing of best practice.

## **DA Training for ICB Staff**

The ICB safeguarding team has delivered ten training sessions during 2024-2025 to raise the awareness of domestic abuse which has doubled from the previous financial year.

The training provides basic knowledge of the support available if they or another employee is experiencing domestic abuse.

## **GP Newsletter**

The ICB safeguarding team have produced a bimonthly newsletter that is cascaded across primary care. The contents provide a variety of updates to ensure staff are fully informed on best practice to safeguard adults and children, safeguarding training opportunities and details on how staff can be supported to carry out their roles.

## **Supporting Campaign Awareness**

The ICB safeguarding team and ICB communications team have supported several safeguarding events led by Lincolnshire partners including Domestic Abuse '16 days of action' (November 2024) ICON Awareness Week (September 2024), and Safeguarding Adults Week (November 2024).

## **Mental Capacity Act**

The Named GP for safeguarding with the support of the Head of Safeguarding Adults and Primary Care have delivered Mental Capacity Act training as part of the Level 3 Safeguarding Children and Adults training sessions to primary care staff including trainee GPs. This is to ensure that Lead GPs are compliant as per the Intercollegiate Guidance documents.

## **Level 3 Safeguarding Training**

The ICB safeguarding team in collaboration with the Lincolnshire Local Medical Committee (LMC) and Lincolnshire Police (PREVENT agenda) has continued to deliver level 3 safeguarding adults and children training to ICB staff, trainee GPs and primary care staff across Lincolnshire. During the period April 2024 and March 2025, circa 400 staff have attended this training.

# Impact of Safeguarding Training.

## **Safeguarding Level 3:**

“This training was very helpful and informative”

“A well-presented course”

“I wasn't looking forward to a whole day of training, but it turned out to be much more interesting than I thought, an engaging and informative session, thank you.”

“Thinking about patients who may be self-neglecting, have capacity but declining help, that it should be reviewed periodically in case they change their mind”

“Recognising signs of physical abuse in children ”

“How ACES greatly impact on Mental Health”

“The impact of missed opportunities in safeguarding children. This will impact on my practice as I hope to be more vigilant”

“The knowledge of local county lines and modern-day slavery in our community was new to me”

## **Refresher training:**

“Very useful training, thank you”

“Informative training”

“Brilliant update training and well presented, thank you”

“Massive amount of information covered but done well”

“Lots of information provided but at a good pace and very informative”

“Thank you for a very informative day”

“I updated our ‘was not brought’ policy as a result of the recent child and adult safeguarding course I attended, the example policy I received after the training from the safeguarding team was very useful, thank you”.

“Excellent update and refresher”

# Safeguarding Partnerships.

## Work undertaken 2024-2025 (Glossary of terms page 23).



**Lincolnshire Safeguarding Adult Board:** Under the terms of the Care Act (2014), each local authority must set up a safeguarding adult board, with statutory partners from the local authority, police, and ICB. The safeguarding adult board leads on adult safeguarding arrangements across its locality, overseeing and coordinating the effectiveness of the safeguarding work of its member and partner agencies.

The ICB safeguarding team have continued to participate as key statutory partners in all aspects of the Local Authority Safeguarding Adult Board (SAB)

The prevention priorities included in the LSAB's wider 3-year strategic plan: have been informed by a joint needs assessment with the other statutory safeguarding partnerships in Lincolnshire, supplemented by a detailed analysis of Lincolnshire's safeguarding adult enquiries as reported in the national NHS Digital Safeguarding Adult Collection (SAC). In addition to learning from Safeguarding Adult Reviews (SAR's). These prevention priorities are also linked to the LSAB Risk register.

One of the ways they do this is by agreeing prevention priorities that will help to keep people safe and avoid safeguarding risks escalating. These priorities are set out in the prevention strategy which makes it clear that in Lincolnshire we will not tolerate abuse, exploitation, or neglect. Working together we will continue to improve collective wellbeing and prevent abuse and neglect: [PowerPoint Presentation \(moderngov.co.uk\)](#).

The ICB safeguarding team continue to participate in LSAB and Safety Lincolnshire Partnership (SLP) subgroups across Lincolnshire including those focusing on transitions, self-neglect, Safeguarding Adults Reviews (SARs), quality and performance, learning and development, and policies and publications. The ICB safeguarding team enable learning from SARs to be discussed and disseminated across health partners in supporting the LSABs to evidence implementation of learning into practice across Lincolnshire.

### **Safeguarding Adults Reviews**

The ICB safeguarding team are involved in 1 Safeguarding Adult Review (SAR) between April 2024 and March 2025. Methodology involved the use of a practitioner learning event. The report has not been finalised however the safeguarding team have provided comments to the draft report and recommendations and engaged with the GP to ensure the primary care voice was heard in informing best practice.

The learning for this SAR identified the following themes:

1. Right Care Right Person
2. Mental capacity
3. Professional curiosity
4. Non-Engagement



**Lincolnshire Safeguarding Children Partnership:** The task of organising local safeguarding arrangements is shared by three statutory partner agencies - local authority, police, and ICB. The Children Act (2004) places a duty to establish multi-agency safeguarding arrangements for the local child population, with other relevant agencies as they deem appropriate. The partners must work together to safeguard children and promote the welfare of all children in their area, and to monitor and ensure the effectiveness of those arrangements. The statutory partners are equally accountable for the system they create.

The priorities for the Lincolnshire Safeguarding Children Partnership (2022-2025) are:

### **Tackling Child Exploitation**

Child Exploitation and Missing (CEM) Subgroup & Child Sexual Abuse (CSA) Working Group meet on a regular basis to drive forward the work in relation to 'Operational MACE' (Multi-Agency Child Exploitation). In 2024 the LSCP completed an audit which considered the multi-agency response to child exploitation. The ICB safeguarding team supported and represented primary care throughout the process.

### **Enhancing the emotional wellbeing of children and young people**

The ICB works with partners to ensure a joined-up approach to providing effective advice, training, and resources in supporting children and young people to maintain their emotional wellbeing.

### **Identify and reduce the impact of neglect on children and young people**

The ICB safeguarding team has supported the development of the LSCP Child Neglect Tool and Neglect Scales, which was launched to professionals in December 2024.

### **Promoting healthy and respectful relationships**

Education subgroup and partners work with children and young people to develop an understanding of what a healthy and equitable relationship is within the context of their family, friendships, education setting, community, and online world.

### **Identify and reduce the impact of physical and sexual harm**

CSA Steering & working group, CEM subgroup; The LSCP has worked alongside the Centre of Expertise on Child Sexual Abuse with the aim of reducing the impact of child sexual abuse through improved prevention and a better-informed response. In 2024 the LSCP completed an audit which considered the multi-agency response to child sexual exploitation. The ICB safeguarding team supported and represented primary care throughout the process.

### **Child Safeguarding Reviews**

The Designated Doctor was a panel member for the one **Rapid Review** undertaken in Lincolnshire between April 2024 and March 2025.

Themes identified in the Rapid Review include:

- Ensuring the voice of the child is captured in those over 16 years of age
- A review of the training offer around self-harm and suicide
- Greater promotion of support service available regarding self-harm

- The development of best practice advice regarding clear and share exit strategies when multiple agencies are supporting a family

### **Child Death Overview Panel (CDOP).**

When a child or young person under the age of 18 years dies, the circumstances of their death are reviewed by the LSCP Child Death Overview Panel (CDOP). As a statutory multi-agency and multi-disciplinary panel, CDOP provides an opportunity to identify any modifiable factors associated with the death and use this learning to reduce risks to other children and young people.

The Designated Doctor is the chair for these meetings. The role includes contribution of clinical expertise to the review and to disseminate learning across the health economy, including within primary care.

## **7 Minute Briefing – CDOP annual report 2024-25.**

### **What is CDOP?**

The Lincolnshire Child Death Overview Panel (CDOP) reviews the death of every Lincolnshire child to see if any lessons can be learned. We are aiming to prevent future deaths where we can and to improve care and support for children, their families, and communities.

The number of child deaths in Lincolnshire notified to CDOP between 1<sup>st</sup> April 2024, and 31<sup>st</sup> March 2025 was 37. Lincolnshire CDOP has completed 37 child death reviews during this period (another 38 cases remain open, with 22 awaiting the outcome of a coroner's inquest. Nationally there continue to remain long delays in the coronial system).

### **Quick facts:**

- 68% of all deaths reviewed were male.
- 54% of deaths were under one year of age.
- 97% of deaths were of white British ethnicity, 3% other
- The commonest place of death was a neonatal ward/unit, as is the case nationally.
- 4 children were known to have a disability.
- 24% children were known to social care, comparable to the national average
- The commonest cause of deaths is a neonatal or perinatal event, for example, being born prematurely, or a genetic/congenital anomaly.

### **Modifiable factors**

These are factors where, if actions could be taken through national or local interventions, the risk of future child deaths could be reduced.

Modifiable factors were identified in 51% of the deaths reviewed (national average is 43%). Smoking during pregnancy or within the household is a continuing theme (it is the commonest modifiable factor nationally), as is a raised BMI during pregnancy.

### **Adverse childhood experiences (ACEs)**

11 children were identified to have ACEs; the highest number of ACEs in a single case was 6. The commonest ACEs found were parental separation and mental illness in a close family member.

## **CDOP activities and achievements:**

Supporting Safer Infant Sleeping Practices:

- Launch Lincolnshire's Safe Sleep Tool to evaluate infant sleep safety, with a focus on regular review and enhancement based on user feedback. National tool launching February 2026.

Raised maternal body mass index:

- Lincolnshire's Public Health continues to develop a targeted healthy weight service targeting individuals before and during pregnancy.

Learning from Traumatic Incidents:

- The Lincolnshire Road Safety Partnership has submitted proposals to the Department for Transport aimed at enhancing driving safety for young and newly qualified drivers.

## **Preventing Suicide and Toxicity Deaths**

- CDOP wrote a supporting letter to the Children and Young People (CYP) Suicide Prevention Steering Group to ensure young people, families, and professionals are provided with clear information on accessing services and effectively discussing suicide.
- Public Health is collaborating with the ICB Pharmacy team to explore local strategies for increasing public awareness about the risks of taking medication prescribed to others.
- CDOP enhanced its communication efforts to better support stakeholders. The first CDOP newsletter was developed and distributed, providing stakeholders with insights into the panel's activities and key developments. It was also shared more broadly with colleagues in the ICB to ensure wider awareness of important local and national child death review updates and data.
- From the 1<sup>st</sup> April 2024 Lincolnshire CDOP sends a letter to parents and carers following the death of a child/young person. The letter details the CDOP process, offers parents/carers the chance to share their thoughts into CDOP and is accompanied with a list of local and national bereavement support organisations.

## **Appointment of Designated Doctor for Child Deaths**

An experienced paediatrician has been recruited to this post, commencing 1<sup>st</sup> April 2025. This is the first appointment of its kind in the county and, among other things, will assist in ensuring that all child deaths are managed through the child death review process, in line with national guidance.

Lincolnshire Domestic Abuse Partnership (LDAP): The Domestic Abuse Act (2021) sets standards and promotes best practice. It places domestic abuse on a statutory footing, increasing awareness and understanding and informing agency response to strengthen the support provided for victims. Tier one local authorities have a statutory responsibility to appoint a local Partnership Board for domestic abuse – LDAP was established in 2022. The ICB is a key statutory partner of this partnership.

The challenge of ending domestic abuse involves breaking cycles of abuse, preventing future incidents, and influencing society to change cultural norms. The Domestic Abuse Needs Assessment, the Strategic Assessment, Community Safety and Safeguarding in Lincolnshire documents identify many opportunities.

The Lincolnshire Domestic Abuse Partnership (LDAP) works in a committed and collaborative way to stop domestic abuse through education and intervention. The Partnership practices a continual cycle of domestic abuse need assessments at three-yearly intervals. An intelligence-led approach allows continual growth and understanding in identifying and responding to changes, ensuring the right services are in the right place. The Partnership employs reflective practice to continuously improve.

The creation of a “survivor network” will help support people more effectively, making change that really matters to people. The Domestic Abuse Strategy 2025 – 2028 (revised December 2024) [Appendix A - Lincolnshire Domestic Abuse Strategy 2025-28.pdf](#) sets out shared ambitions and key priorities for the LDAP and outlines key areas of action over the next 3 years:

- To invest in a business intelligence picture for Lincolnshire, developing a continual cycle of data from partner agencies. Evaluation and performance measuring against the strategy and delivery plan [Domestic Abuse - Lincolnshire Health Intelligence Hub \(lhih.org.uk\)](#)
- To invest in community and neighbourhood engagement including a survivor network, business engagement, voluntary sector, and community groups
- To invest in safe accommodation for domestic abuse victims and their children, including the sanctuary scheme/target hardening
- To invest in early intervention, including school and early years, creative use of health settings, tackling culture and language and working collaboratively across the tri board in Lincolnshire
- To develop a perpetrator response to meet the needs appropriate for a rural community
- These priorities are an inclusive strategy relevant to all victims of domestic abuse

The ICB safeguarding team continue to actively participate, as statutory partners, in the LDAP subgroups, Domestic Abuse Related Reviews and the MARAC process alongside system partners.

## **Domestic Abuse Related Death Reviews**

Between April 2024 and March 2025, the ICB safeguarding team has supported 17 Domestic Abuse Related Death Reviews (DARDR). There have been 3 new DARDR commissioned during the period, 2 relating to suicides and 1 to murder.

The safeguarding team are statutory panel members for all DARDR's, including agreeing final reports and recommendations for across agency learning.

The safeguarding team has supported Lincolnshire GPs in the completion of the chronologies and individual management reports (IMR's) that inform these reports and has encouraged GP involvement in the process.

The DARDR's continue to evidence the complexity of cross border working, information sharing, suicide, bidirectional abuse, mental health, and adverse childhood experiences (ACEs).

The learning from these reviews informs the safeguarding training we develop and deliver to the ICB and GPs.

## Review of Priorities set for 2023-2024.

We planned ...	We did ...
<p>Build on the ICB safeguarding primary care role by arranging face-to-face events to support networking and system development in this area.</p>	<p>Implementation of a safeguarding administration forum to enable safeguarding administrators nominated by each GP practice to be provided with up-to-date safeguarding processes and for the sharing of best practice.</p> <p>The Named GP in the team has held safeguarding forums to provide support and reflection for practice safeguarding issues.</p> <p>The safeguarding team has held face-to-face training sessions.</p> <p>The safeguarding team has carried out visits with practices that have required additional support to embed their safeguarding processes.</p>
<p>Develop a System Learning Approach with quality team colleagues to ensure that recommendations from statutory safeguarding reviews are implemented and embedded in practice and policy.</p>	<p>The safeguarding team has supported the implementation of the Primary Care QEWS (Quality Early Warning Score) process which is made up of four stages – Preparation, Population, Evaluation and Reporting. Preparation involves engagement with the practices and discussion across ICB teams (e.g. Quality, Primary Care and Safeguarding) to provide a holistic view of the practice within the context of the national quality standards.</p> <p>Developed and rolled out the children and adult safeguarding self-assessment tool, which requires the practice to complete on an annual basis to benchmark its safeguarding arrangements against the NHS England safeguarding accountability and assurance framework. The tool enables the practices to develop an action plan to achieve compliance against the set standards. Attendance at the Quality Assurance Primary Care Oversight group</p>
<p>Provide system leadership for safeguarding, capturing the voice of our population and workforce to support service resilience and adaptation to working with partners across the ICS.</p>	<p>Adopted a collaborative approach to support Primary Care Networks (PCN's) and neighbourhood teams to safeguard people and communities.</p> <p>Stakeholder engagement.</p>

We planned ...	We did ...
<p>Support Continuing Health Care colleagues in managing deprivation of liberty safeguards in the community.</p>	<p>Developed a standing operating procedure to ensure staff are fully informed and empowered to follow the process of identifying and progressing individuals that lack capacity in the community to the court of protection.</p> <p>Monthly meetings to review case tracker, obstacles and sharing of best practice.</p> <p>Commissioned new legal firm to support and provide training for court of protection cases.</p> <p>Drastically reduced the back log of cases requiring progression to the court of protection.</p>
<p>Support the delivery of the multi-agency arrangements for the Serious Violence Duty, which includes implementing the Domestic Abuse Act (2021) strategies across Lincolnshire.</p>	<p>ICB attendance as health representative and a specified authority at the Serious Violence Core Priority Group (SV CPG). ICB attendance as a key statutory partner to the Lincolnshire Domestic Abuse Partnership (LDAP)</p> <p>Supported the completion of a mapping exercise for interventions to reduce serious violence across Lincolnshire, refresh of the Serious Violence Strategy and bidding process for funding projects to reduce serious violence. Joint project sponsor, alongside Probation, for the Eve Project, a community project supporting women who have experienced domestic abuse.</p>
<p>Progress system development in relation to Children in Care and Care Leavers which will include enhanced health offers and pathways</p>	<p>The LICB works closely with partners across the system, including the LA and health agencies, to support and improve services for this cohort of vulnerable children and young people. A member of the safeguarding team attends the Corporate Parenting Panel, and the Designated Nurse is chair for the Children in Care and Leaving Care Steering Group, which identifies the operational direction and priorities for work to improve health outcomes. LICB has funded prepayment prescription certificates for care leavers since 2023, the safeguarding team processes the scheme and continues to promote this enhanced health offer, which has seen a recent increase in the number of young people taking it up. In 2024 changes to processes were implemented to ensure continuous health records for adopted children. The Designated Dr has worked closely with health partners, LA and primary care to progress these changes.</p>

## Future Priorities and Objectives.

- Support development of changes required to meet national requirements in line with NHS/ICB reforms.
- Facilitate implementation of children's social care reforms
- Review system partnership working for children strategy discussions.
- Enhancing multi-agency working
- Policy and partnership development
- Continue to deliver our statutory responsibilities and those outlined within the SAAF (2024) for Safeguarding (Children, Looked After Children and Adults) on behalf of the ICB.
- Work with digital leads and partners to implement CP-IS (Child Protection - Information Sharing) Phase 2 which helps health and social care workers share information securely to better protect children and young people who are either looked after or have a child protection plan.

## Conclusion.

2024-2025 has been a busy period for the ICB safeguarding team, which has worked with local, regional, and national colleagues to respond to the ever-increasing safeguarding agenda. The team has provided excellent support and made positive contributions to the partnership arrangements across the system, demonstrating safeguarding health expertise and guidance. The focus for 2025-2026 is to continue to work in collaboration with safeguarding partners to ensure that safeguarding is core business within all aspects of our partnership work.

In March 2024 the government announced NHS reforms, which included reducing the costs of ICB's by 50% by the end of quarter 3 2025-2026, the work to progress this however has been delayed. Decisions regarding future ICB safeguarding structures and functions are still to be made, but the team will support the development of changes necessary to meet the national requirements in line with the reforms and will remain focussed on its responsibility to improve safeguarding processes, services and outcomes for Lincolnshire's vulnerable children and adults.

## Glossary.

ACEs	Adverse Childhood Experiences
CDOP	Child Death Overview Panel
CEM	Child Exploitation and Missing
CP-IS	Child Protection – Information Sharing
CSA	Child Sexual Abuse
CSPR	Child Safeguarding Practice Review
CYP	Children and Young People
DA	Domestic Abuse
DARDR	Domestic Abuse Related Death Reviews
DPIA	Data Protection Information Agreement
ICB	Integrated Care Board
ICON	Prevention of Abusive Head Trauma Campaign
ICS	Integrated Care System
ISA	Information Sharing Agreement
LA	Local Authority
LDAP	Lincolnshire Domestic Abuse Partnership
LSAB	Lincolnshire Safeguarding Adults Board
LSCP	Lincolnshire Safeguarding Children Partnership
MACE	Multi-Agency Child Exploitation
MARAC	Multi-Agency Risk Assessment Conference
NHSE	NHS England
SAB	Safeguarding Adult Board
SAC	Safeguarding Adult Collection
SAR	Safeguarding Adult Review
SLP	Safer Lincolnshire Partnership
SMART	Specific, Measurable, Achievable, Relevant, Timely
SQR	Service Quality Review
S1	SystemOne